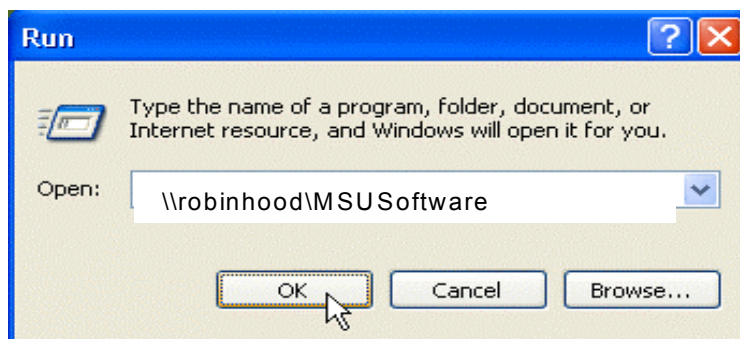


MURRAY STATE UNIVERSITY
How to Install TCP3270
For use with the GLIN System
(Windows Operating System)

1. Click on the **START** Menu button on your desktop.
2. Click on **RUN** in the Start Menu.



3. When the **RUN** dialog box appears, type `\\robinhood\MSUSoftware` in the Open box and click on **OK**.



4. A software download folder will open containing a file named **TCP3270**. Double-click on this file to start the installation process.
5. Hit "**Next**" through all of the installation screens to install the default parameters for the software.
6. A Setup Complete box will appear. Click on the **X** next to "Yes I want to view the ReadMe file now" to remove the **X** (all boxes should be clear with no X's). Then, click on **FINISH**.

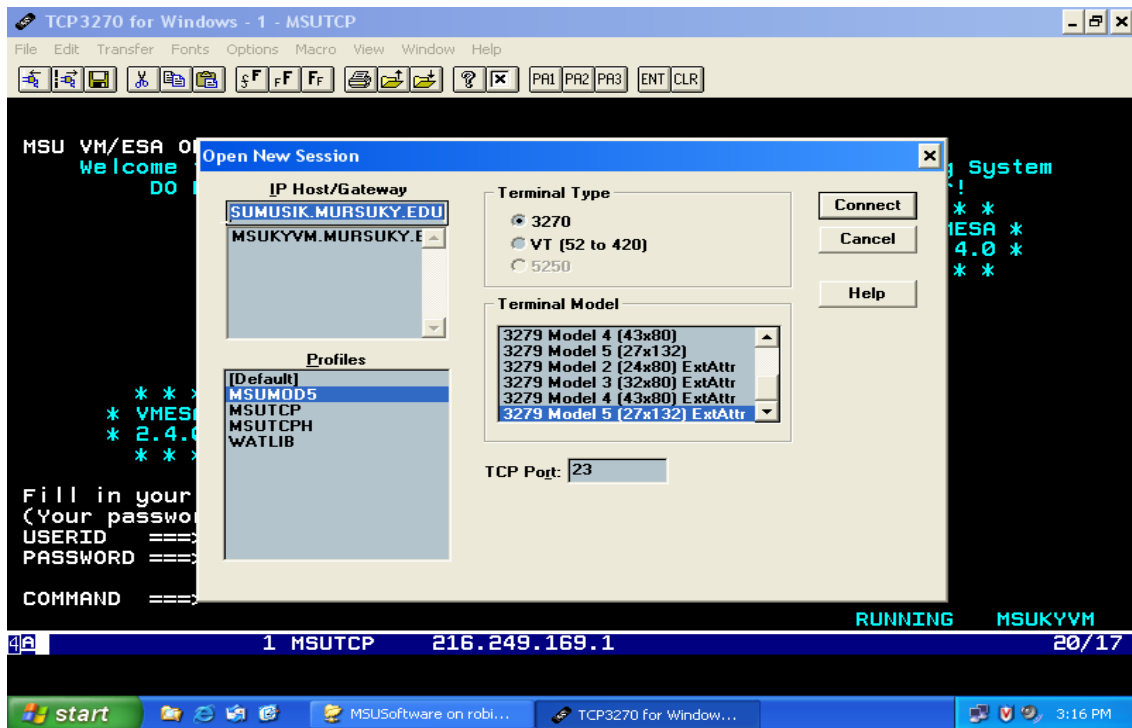
7. Once the application is installed, you can access it by clicking on the **START** Menu button.



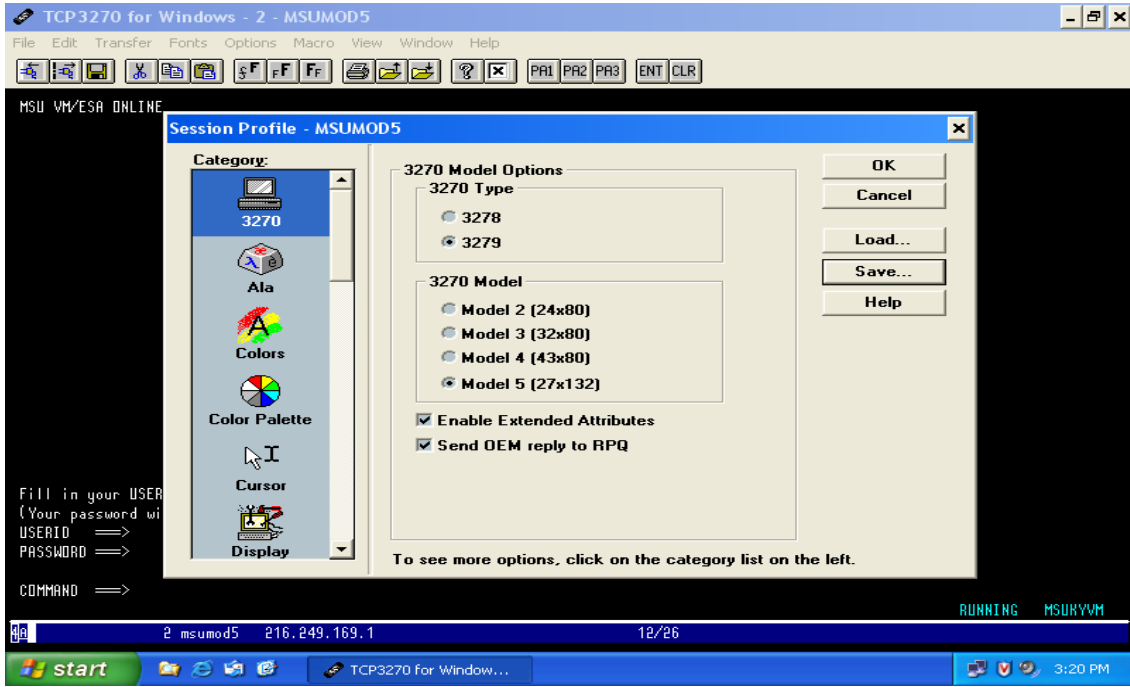
8. Click on **PROGRAMS** in the Start Menu.



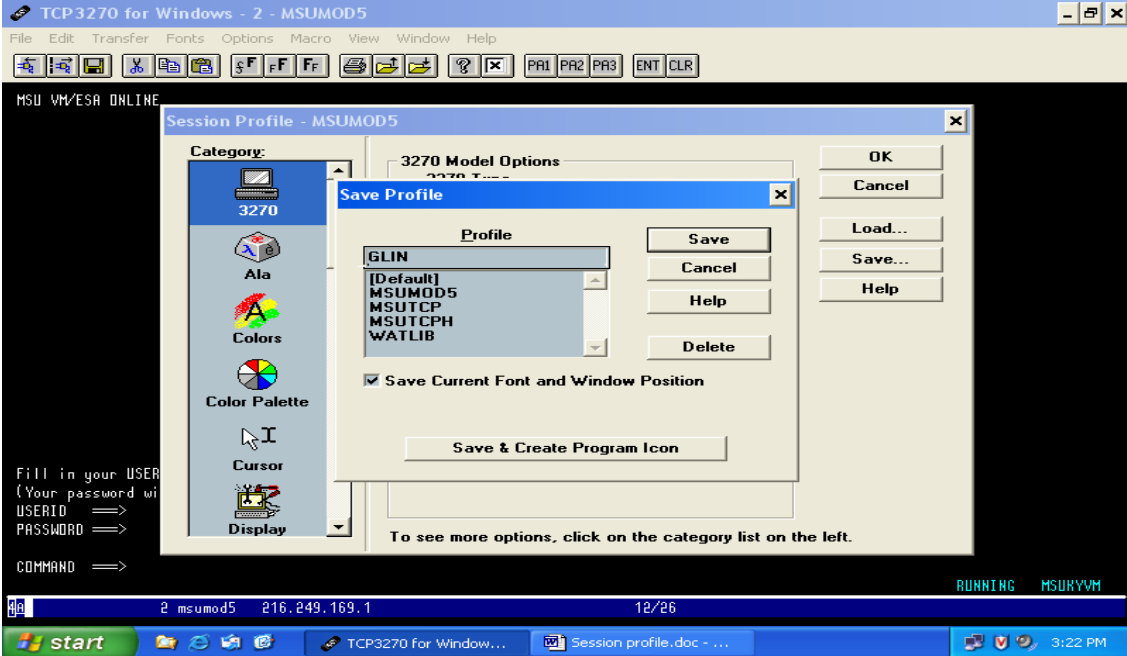
9. Find and click on the folder called **TCP3270 FOR WINDOWS**. Then, find and click on the file **TCP3270 FOR WINDOWS**.
10. To start the TCP3270 application, click on **OK** in the pop up box that appears and a black window will appear with MSU in the middle.
11. Once the application has started, click on **FILE** from the top menu bar and then click on **OPEN SESSION**. The following Open New Session dialog box will appear:



12. Under "Terminal Type," click the box next to 3270, under "Profiles," click once on the "MSUMOD5" to highlight it, and under "Terminal Model," click once on the "3279 Model 5 (27x132) ExtAttr" to highlight it. After these selections have been made, click on the **CONNECT** button to open a new window.
13. In the new window, click on **OPTIONS** from the top menu bar and then click on **SESSION PROFILE**. The following Session Profile dialog box will appear:



14. Click the **SAVE** button to bring and the following Save Profile dialog box will appear:



15. Under "Profile," type the word **GLIN** as the profile name. Then click on **SAVE & CREATE PROGRAM ICON** to bring up the "Create Program Manager Icon" box. Find and click on **TCP3270 FOR WINDOWS** to highlight it. Click the **CREATE** button to store the shortcut to the application under the Start Menu in the "TCP3270 for Windows" folder.
16. To access GLIN, click on **START** Menu button, then click on **TCP3270 for Windows**, and then click on **GLIN**. This will bring you to the MSU signon page.

See [GLIN Access Instructions](#) on how to access GLIN.